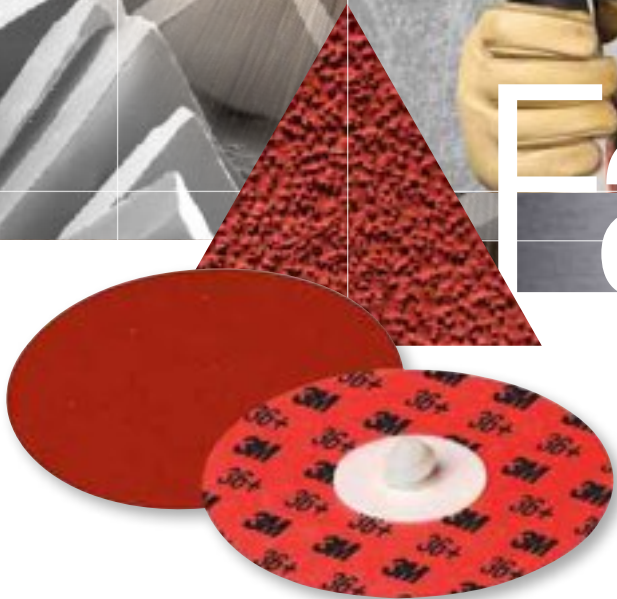


3M™ Cubitron™ II Roloc™
Durable Edge Disc 984F



Fast meets furious



Faster cut rate. Longer life.
Tough around the edges.

Grind, blend, finish and deburr longer, faster and with greater productivity than ever on all metal types with 3M™ Cubitron II™ Roloc™ Disc 984F. In fact, it's one of the longest-lasting Roloc™ Discs available in the industry today. Suitable for virtually all metals including mild steel, stainless steel, aluminium & titanium.

CUBITRON™ II

3M



Furious performance with fewer edge failures.

When you're using a disc sander, you're relying on the edge of your abrasive disc to grind, blend and finish. If you've been frustrated by edge failures, make the switch to 3M™ Cubitron™ II Roloc™ disc 984F. Its durable edge backing – combined with 3M precision-shaped grain – make this one tough disc that lasts longer and performs stronger.

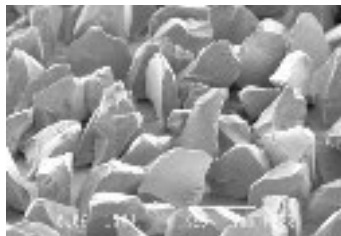
- Features a durable edge backing for extended edge retention.
- Precision-shaped grain and grinding aid allow discs to run cooler.
- Precision-shaped grain self-sharpenes for consistent and continuous cutting power with less pressure.
- Quality 3M™ Roloc™ buttons for an easy on/off attachment that stays in place.
- For grinding, blending, finishing and deburring applications on virtually all metal types.

Available in:

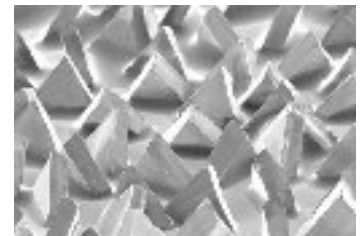
- 50mm (2") & 75mm (3")
- Grade 36+, 60+ and 80+

Cubitron II Roloc discs outperform others because they are power-packed with fast-cutting 3M precision shaped grain – a self-sharpening feature that keeps them running cool and long. Plus, a durable edge backing makes the discs stronger around the edges so they won't fray or wear out prematurely. And the Cubitron II brand means it's all-around industrial tough – for all-around superior performance.

Conventional Ceramic Grain



3M™ Precision-Shaped Grain



3M precision-shaped grain, engineered with ultra-sharp grain, cuts fast and lasts long. These triangular-shaped grains (right image) are electrostatically oriented to form sharp peaks, each acting like individual cutting tools that slice through metal, wear evenly and provide super-long life and consistency at any grinding pressure.



CUBITRON™ II



Tips for Best Results

Use the total 3M™ system and optimise the Roloc™ Disc benefits with 3M Power Tools. You'll maximise the benefits of 3M precision-shaped grain by using 3M Power Tools with the ideal horsepower and operating speeds.

Product No.	Description	Recommended Operating Speed
20231	50mm (2")	20,000 rpm
20232	75mm (3")	15,000 rpm

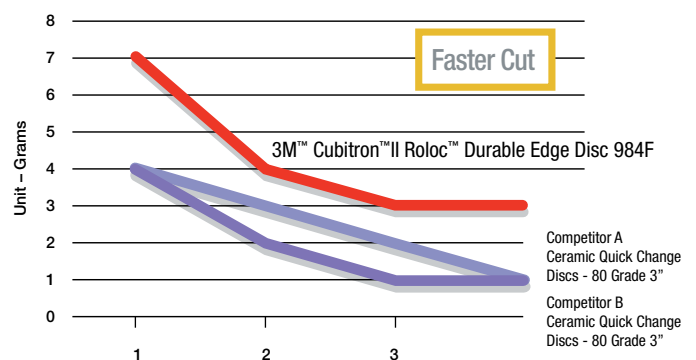
Choose the right accessories for optimised results.

The hardness of the disc pad can effect unit pressure and cut. Choose from 3M's variety of back-up pads to select the perfect degree of aggressiveness or conformability for your job requirements.

Product No.	Description	Max. Operating Speed	Hardness
45095	50mm (2") x 1/4" Thread	25,000 rpm	Medium
45096	50mm (2") x 1/4" Thread	25,000 rpm	Hard
45092	75m (3") x 1/4" Thread	18,000 rpm	Medium
45091	75m (3") x 1/4" Thread	20,000 rpm	Hard

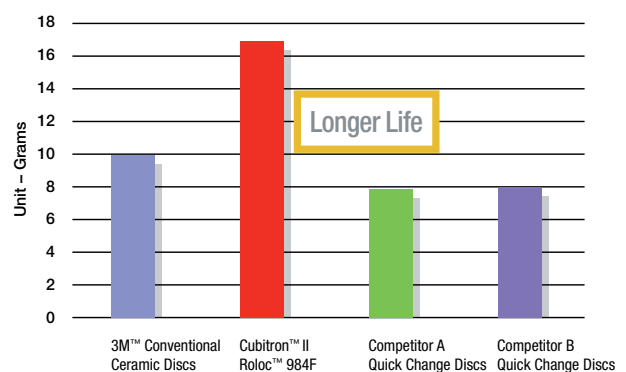
Don't fear the edges. While edges on the work piece may have caused premature edge wear on other discs, they can actually help precision-shaped grains fracture and extend the life of a Cubitron II Roloc 984F disc.

Weld removal – 3M™ Cubitron™ II Roloc™ 984F vs. Conventional Ceramic



3M Internal Results – Weld Simulation Test on 304 stainless steel. (3", Grade 80/80+ equivalents)

Total Cut – 3M™ Cubitron™ II Roloc™ 984F vs. Conventional Ceramic



3M Internal Results – Weld Simulation Test on 304 stainless steel. (3", Grade 80/80+ equivalents)





3M™ Cubitron™ II Roloc™ Durable Edge Disc 984F

3M™ Cubitron™ II Roloc™ Durable Edge Disc Customer Test Results

Application	Metal	Current Disc	Test Results
Grinding	Stainless Steel	Ceramic	Faster cut, better edge durability, better finish
Small weld removal	Mild Steel	Aluminium Zirconia	2-4 times life
Grinding on edges	Aluminium	Aluminium Oxide	Better loading resistance, 2 times faster cut
Deburring	Titanium	Aluminium Oxide	Longer life, runs cooler, less heat generated

*Actual results will vary based on end-user manufacturing processes.

3M™ Cubitron™ II Roloc™ 984F

Diameter (mm)	Grade	Ordering Code	Max Operating Speed	Carton Qty
50	36+	60440230138	25,000 rpm	200
	60+	60440230211	25,000 rpm	
	80+	60440230294	25,000 rpm	
75	36+	60440230146	20,000 rpm	200
	60+	60440230229	20,000 rpm	
	80+	60440230302	20,000 rpm	

Accessories

3M™ Roloc™ Back-Up Pads

Diameter (mm)	Hardness	Ordering Code	Max Operating Speed	Carton Qty
50	Medium	60440237653	25,000 rpm	5
	Hard	0267260	25,000 rpm	
75	Medium	60440237661	18,000 rpm	
	Hard	60440237778	20,000 rpm	

Roloc™ Disc Shaft - With male thread to fit Roloc™ Back-Up Pads

Description	Ordering Code	Carton Qty
6mm shaft / 1/4" Thread	0176040	10

Product Use: All statements, technical information and recommendations contained in this document are based upon tests or experience that 3M believes are reliable. However, many factors beyond 3M's control can affect the use and performance of a 3M product in a particular application, including the conditions under which the product is used and the time and environmental conditions in which the product is expected to perform. Since these factors are uniquely within the user's knowledge and control, it is essential that the user evaluate the 3M product to determine whether it is fit for a particular purpose and suitable for the user's method of application.

Warranty: Unless stated otherwise in 3M's product literature, packaging inserts or product packaging for individual products, 3M warrants that each 3M product meets the applicable specifications at the time 3M ships the product. Individual products may have additional or different warranties as stated on product literature, package inserts or product packages. 3M makes no other warranties, express or implied, including, but not limited to, any implied warranty of merchantability or fitness for a particular purpose or any implied warranty arising out of a course of dealing, custom or usage of trade. User is responsible for determining whether the 3M product is fit for a particular purpose and suitable for user's application. Our goods come with guarantees that cannot be excluded under the Australian Consumer Law. You are entitled to a replacement or refund for a major failure and for compensation for any other reasonably foreseeable loss or damage. You are also entitled to have the goods repaired or replaced if the goods fail to be of acceptable quality and the failure does not amount to a major failure.

Limitation of Liability: Except where prohibited by law, 3M and seller will not be liable for any loss or damage arising from the 3M product, whether direct, indirect, special, incidental or consequential, regardless of the legal theory asserted, including warranty, contract, negligence or strict liability.



3M Australia Pty Ltd Abrasive Systems Division

Bldg A, 1 Rivett Road
North Ryde NSW 2113
Australia
Phone 136 136
www.3m.com.au

3M, Cubitron and Roloc are
trademarks of 3M.

Please recycle. Printed in Australia
© 3M 2011. All rights reserved.